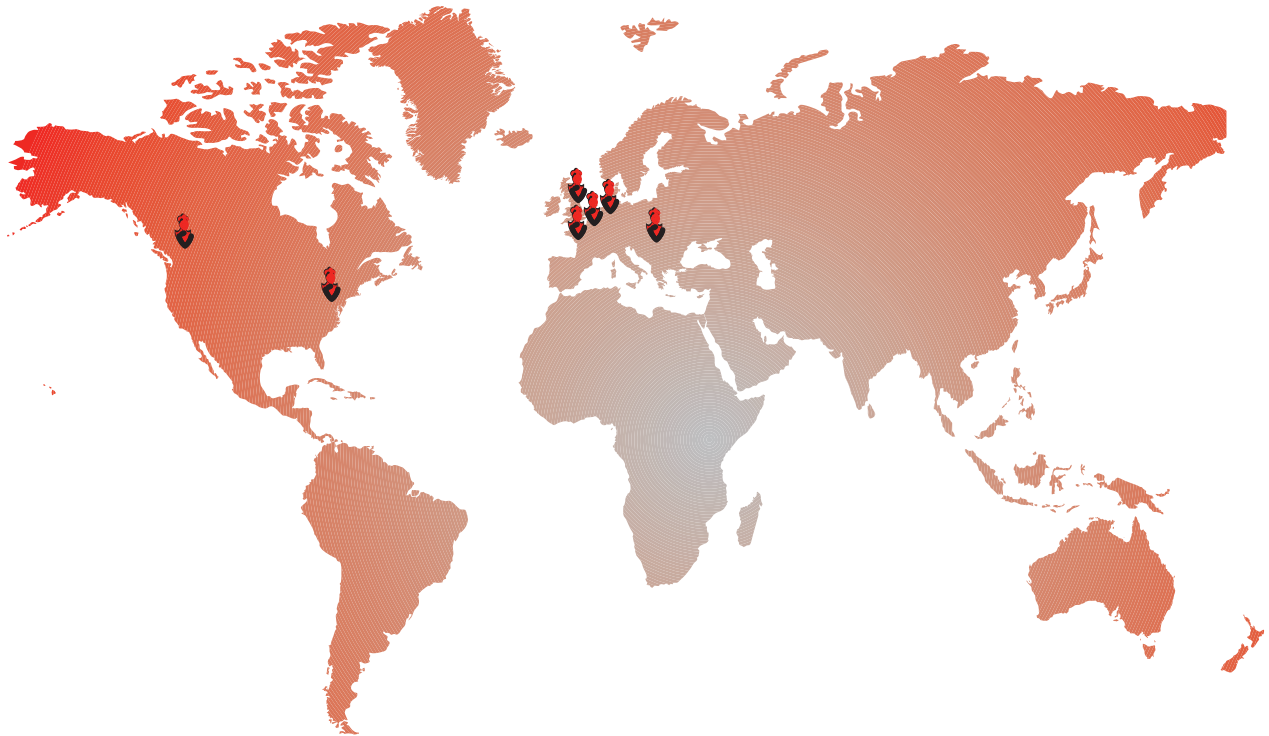




High Performance Waterproofing
for Roofs, Cladding, Balconies and Car Parks



IKO is a worldwide enterprise, with more than 3000 employees, and manufacturing plants in Canada, the United States, United Kingdom, Belgium, Holland, France and Slovakia. The company's operations ship products to 96 countries around the globe.



The IKO Group

Despite tremendous growth, IKO has also remained firmly rooted in its family values of **entrepreneurial spirit, craftsmanship and innovation**. The company maintains the fierce independence of its founder, and his belief in the importance of controlling the raw materials used in the manufacturing process.

IKO also strives to back the **best products** in the industry with the **best service**. The IKO family includes not just the ownership, but the thousands of dedicated employees across its global operations who share the company's ideals of craftsmanship, attention to detail and world class service for our customers. The commitment of IKO's employees is the key pillar in the company's success in today's competitive marketplace.

The ultimate proof of the company's commitment to quality and innovation is its own success. From humble beginnings to a modern manufacturer with global reach, IKO has remained committed to the values that were the foundation of the business envisioned by our founder, **Israel Koschitzky**. That combination of old-time values, combined with cutting edge technology and innovation, means IKO will continue to **Set the Standard** both now and in the future.

IKO in the UK

In the UK, the IKO name has become synonymous with delivering dependable waterproofing solutions backed by supreme levels of customer service. This hard earned reputation has been built on a foundation of quality and an ethos of customer service, which permeates through the organisation and remains as strong today as it did **100 years ago**.

The rewards speak for themselves. IKO PLC is now well established as the **UK market leader** in the design, manufacture and installation of roofing and waterproofing systems. With this enviable position comes an unwavering commitment and responsibility to continue investing in new product solutions, new manufacturing facilities and the industry's largest team of people, all dedicated to achieving excellence at every level.





IKO Polimar is the high performance range of liquid waterproofing systems. Regardless of application, IKO Polimar systems are extremely versatile, completely cold applied and can be specified to match the longevity of your project through a range of build up options.

IKO Polimar FCS (Fast Curing System) - Up to 25 Year System



IKO Polimar Fast Curing System (FCS) offers specifiers and installers the benefit of rapid curing and enhanced efficiencies on site. IKO Polimar FCS has been developed to provide a fast curing solution for roofs, car parks, balconies and walkway applications and has been awarded accreditation from the British Board of Agrément (BBA certificate no. 14/5178).

IKO Polimar EC/UV - Up to 20 Year System

IKO Polimar EC/UV liquid applied technology has been specifically developed to deliver exceptional waterproofing for flat or metal profile roofs.

IKO Polimar is part of IKO's cold applied portfolio. Cold applied systems meet the demand for systems minimising risks associated with hot works.

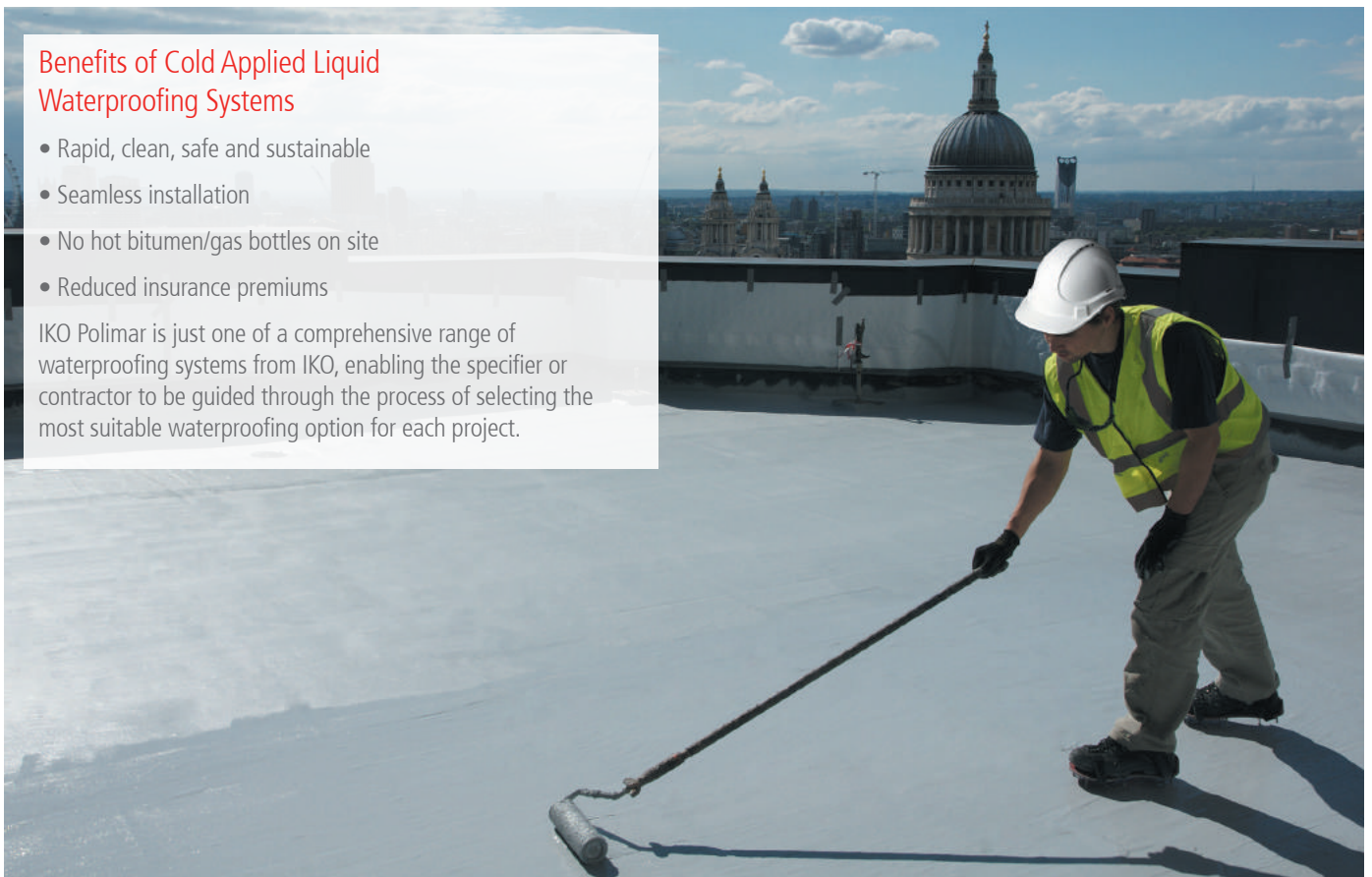
Contents

About IKO	2
IKO Polimar Roofing Systems	3
IKO Polimar FCS Roofing System	4
IKO Polimar EC/UV Roofing System	6
IKO Polimar Seal Roofing System	8
IKO Polimar CRS Glaze Protection System	09
IKO Polimar CRS (Cladding Refurbishment System)	10
IKO Polimar FCS Balcony and Walkway System	11
IKO Polimar FCS Car Park System	13
Coverage Rates	15
Ancillaries	17
IKO Polimar Projects	18

Benefits of Cold Applied Liquid Waterproofing Systems

- Rapid, clean, safe and sustainable
- Seamless installation
- No hot bitumen/gas bottles on site
- Reduced insurance premiums

IKO Polimar is just one of a comprehensive range of waterproofing systems from IKO, enabling the specifier or contractor to be guided through the process of selecting the most suitable waterproofing option for each project.





IKO Polimar FCS (Fast Curing System) - Up to 25 Year System

IKO Polimar FCS roofing system is a highly durable system for both refurbishment and new build projects, which offers the additional benefit of rapid curing.

This 2-part, PMMA waterproofing system is specifically designed as a highly durable system for flat roofs. Since it is applied as a liquid, IKO Polimar FCS creates a seamless waterproofing system in which even the most complex roof penetrations can be reliably and durably incorporated. It is also extremely weather-resistant, crack bridging and flexible at low temperatures.

IKO Polimar FCS roofing system consists of a primer (if required), a waterproofing layer, a reinforcement fleece, and a sealing coat. IKO Polimar FCS sealer coat is available in two standard colours - medium grey and dark grey. BS 4800 or RAL colours are available on special order.

Applications

IKO Polimar FCS roofing system is used for creating a highly durable waterproofing membrane on flat roofs in new build developments and for refurbishment. The system is suitable for residential, commercial and industrial properties - wherever secure waterproofing with a long service life is desired.

Durability

The IKO Polimar FCS roofing system is designed to give up to 25 years protection when installed by an IKO Approved Contractor in accordance with an IKO specification.

System Benefits

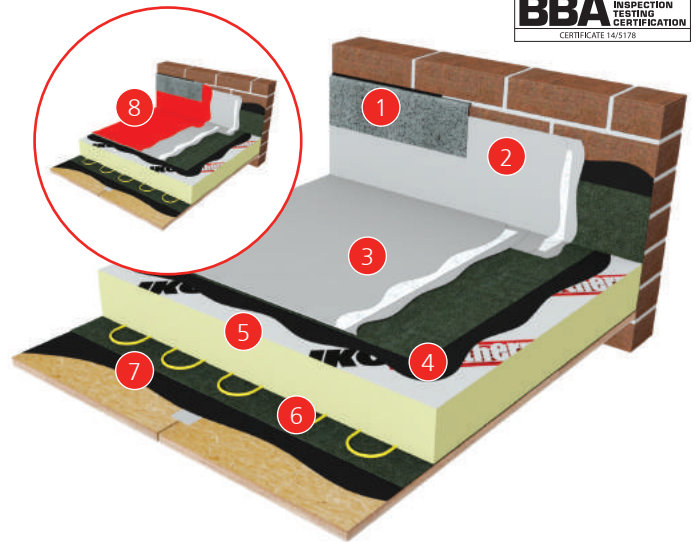
- Roof waterproofing system
- 25 year BBA approved system
- Waterproofing layers cure in 20 minutes
- Seamless waterproofing with fleece reinforcement
- Liquid application ensures seamless incorporation and secure waterproofing of the most complex upstands
- Highly flexible and crack-bridging even at low temperatures
- Permanently weather-resistant (resistant to high and low temperatures, UV rays, hydrolysis)
- Rot and root resistant (FLL tested and approved)
- Resistant to most commonly used acids and alkali solutions
- Fully bonded to the substrate, therefore no flow paths for water
- Easy and fast application
- Can be applied to almost any substrate



IKO Polimar FCS Roofing Wall Upstand (Warm Roof) - 20 & 25* Year System



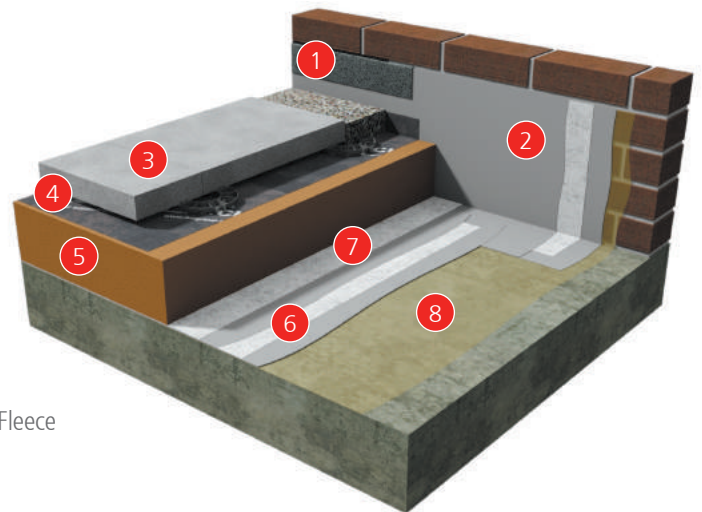
- 1 IKOflash Lead Free Flashing
- 2 IKO Polimar FCS Detailing - 2 coats with IKO Polimar FCS Detailing Fleece reinforcement
- 3 IKO Polimar FCS Waterproofing; with IKO Polimar FCS Reinforcement Fleece
- 4 IKO Polimar Preparation Membrane
- 5 IKO enertherm ALU Insulation bonded in IKOpro Sprayfast IBA
- 6 IKO Systems Self-Adhesive Vapour Control Layer
- 7 Bonding Agent
- 8 Additional IKO Polimar FCS Sealer Coat for 25 Year guarantee



*For 25 year guarantee, use additional sealer coat

IKO Polimar FCS Roofing (Concrete Deck) Wall Upstand (Inverted Roof) - 20 Year System

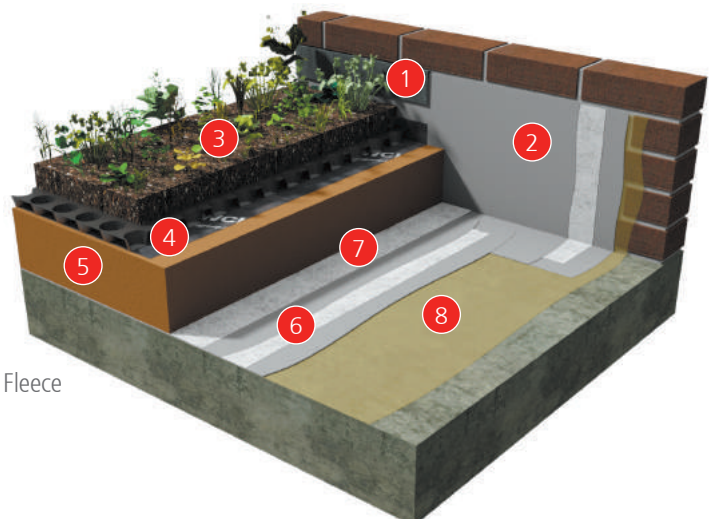
- 1 IKOflash Lead Free Flashing
- 2 IKO Polimar FCS Detailing - 2 coats with IKO Polimar FCS Detailing Fleece reinforcement
- 3 Minimum 50mm thick paving slabs on proprietary paving supports or ballast
- 4 IKO enertherm WCL (Water Control Layer)
- 5 IKO enertherm XPS insulation
- 6 IKO Polimar FCS Waterproofing with IKO Polimar FCS Reinforcement Fleece
- 7 IKO Separating Fleece
- 8 Specified IKO Polimar FCS Concrete Primer



Suitability of the substrate needs to be verified by IKO Technical Services prior to application.

IKO Polimar FCS Roofing (Concrete Deck) Wall Upstand (Inverted Green Roof) - 20 Year System

- 1 IKOflash Lead Free Flashing
- 2 IKO Polimar FCS Detailing - 2 coats with IKO Polimar FCS Detailing Fleece reinforcement
- 3 IKOgreen Extensive Roof System
- 4 IKO enertherm WCL (Water Control Layer)
- 5 IKO enertherm XPS insulation
- 6 IKO Polimar FCS Waterproofing with IKO Polimar FCS Reinforcement Fleece
- 7 IKO Separating Fleece
- 8 Specified IKO Polimar FCS Concrete Primer



Suitability of the substrate needs to be verified by IKO Technical Services prior to application.

IKO Polimar EC/UV Roofing - 15 & 20 Year Systems

The IKO Polimar EC/UV system is available in both 15 and 20 year designed solutions. This premium system is highly flexible in its

design and is suitable for all roof types including warm, inverted and full overlay applications. The high performance polyurethane resins are extremely durable and puncture resistant and the manageable pack size of the products are ideal for areas of limited access.

The flat roof is reinforced with the IKO Polimar GRF glass fibre reinforcing fleece (100gsm for the 15 year system and 225gsm for the 20 year system). The reinforcing fleece gives the product strength and stability on a flat substrate.

IKO Polimar EC

A high performance, high build, single component polyurethane embedment coat. It incorporates moisture triggered curing technology that forms the base layer of the IKO Polimar EC/UV system. With excellent fluid properties for ease of application, this provides a cost effective, high solids coat that offers superb adhesion. IKO Polimar EC can be applied to a wide range of substrates and facilitates excellent detailing in complex areas.

IKO Polimar UV

An elastomeric, high build single component polyurethane UV stable top coat which comprises a blend of moisture triggered polyurethane resins. Once applied, the cured membrane forms

a seamless durable waterproof barrier which provides excellent thermal and UV stability for all climatic conditions.

One to two coats of the IKO Polimar UV stable top coat are applied to complete the roof, depending on design solution. In situations with profiled sheeting or pitched roofing, isolated reinforcing is applied to all panelled joints and abutments, using the IKO Polimar GRF and IKO Polimar BT products (see ancillaries section of this brochure). In addition the IKO Polimar EC/UV system can incorporate a fully integrated slip resistant finish for private balconies and fire escapes.

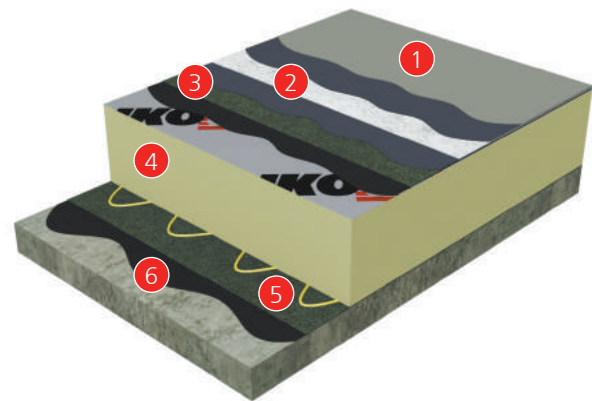
System Benefits

- Premium performance
- Excellent durability and puncture resistance
- Highly flexible in its design application
- Wet on wet EC application saves time
- For new construction or refurbishment projects
- Suits most roof types
- Applicable for full overlay installations
- Can be applied to existing sound substrates
- Simplifies complex detailing
- 15 and 20 year designed solutions
- Slip resistant option for maintenance walkways and private balconies.

IKO Polimar EC/UV for Flat Warm Roofs - 20 Year System

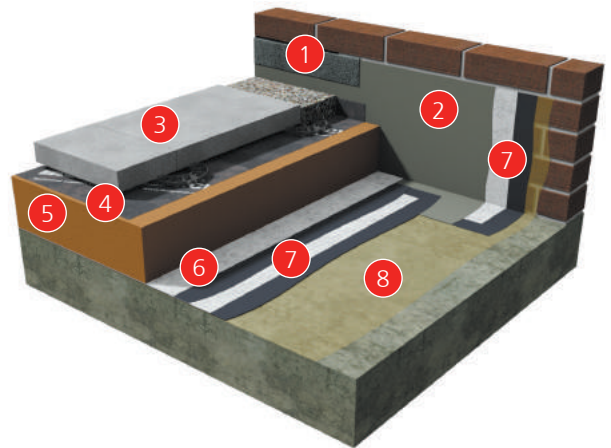
- 1 IKO Polimar UV top coat
- 2 IKO Polimar EC embedment coat. 2 coats wet-on-wet with IKO Polimar 225 GRF reinforcement
- 3 IKO Polimar Preparation Membrane bonded in IKOpro Bonding Agent
- 4 IKO enertherm ALU Insulation bonded in IKOpro Sprayfast IBA
- 5 IKO Systems S-A VCL
- 6 IKOpro Bonding Agent

Suitability of the substrate needs to be verified by IKO Technical Services prior to application.



IKO Polimar EC/UV Wall Upstand for Inverted Roofs - 20 Year System

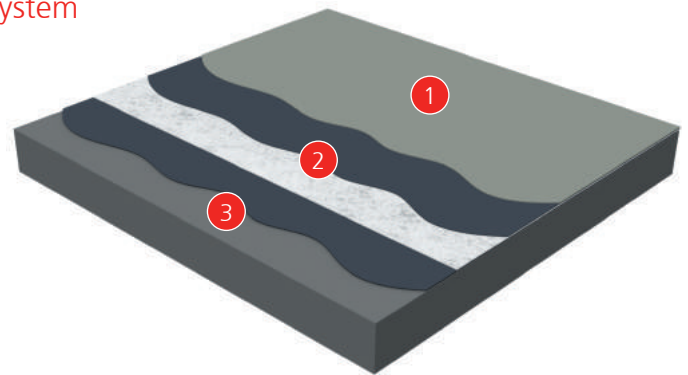
- 1 IKOflash Lead Free Flashing
- 2 IKO Polimar UV top coat to exposed upstands
- 3 Minimum 50mm thick paving slabs on proprietary paving supports
- 4 IKO enertherm WCL (Water Control Layer)
- 5 IKO enertherm XPS insulation
- 6 IKO Separating Fleece
- 7 IKO Polimar EC embedment coat. 2 coats wet-on-wet with IKO Polimar GRF reinforcement
- 8 IKO Polimar GP Primer



Suitability of the substrate needs to be verified by IKO Technical Services prior to application

IKO Polimar EC/UV for Flat Roof Overlays - 20 Year System

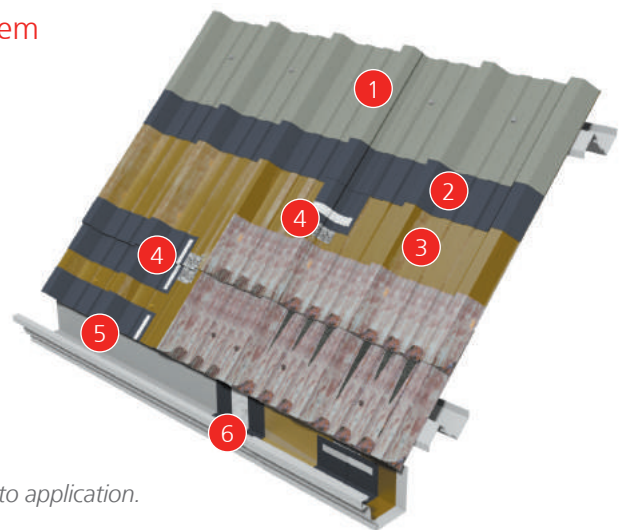
- 1 IKO Polimar UV top coat
- 2 IKO Polimar EC embedment coat. 2 coats wet-on-wet with IKO Polimar 225 GRF reinforcement
- 3 IKO Polimar GP Primer



Suitability of the substrate needs to be verified by IKO Technical Services prior to application.

IKO Polimar EC/UV for Pitched Metal Roofs - 20 Year System

- 1 IKO Polimar UV top coat
- 2 IKO Polimar EC embedment coat
- 3 Specified primer
- 4 IKOpro Bridging Tape followed by IKO Polimar 225 GRF fully embedded in IKO Polimar EC embedment coat to all panel joints
- 5 IKO Polimar UV Top coat
- 6 IKO Polimar EC embedment coat with IKO Polimar 225 GRF reinforcement to all details



Suitability of the substrate needs to be verified by IKO Technical Services prior to application.

IKO Polimar Seal Roofing - 5 Year System

IKO Polimar Seal has been specifically designed as a single application, emergency waterproofing and repair solution for any roof surface with the capability of providing extended protection. It can be applied in all weather conditions including rain and temperatures as low as zero degrees centigrade when used in emergency waterproofing situations. IKO Polimar Seal can also be applied in suitable conditions to complete roof areas to offer a medium term roof waterproofing solution.

IKO Polimar Seal is a single component, solvent based, fibre filled coating comprising a specialist mix of resins, polymers and surface wetting agents.

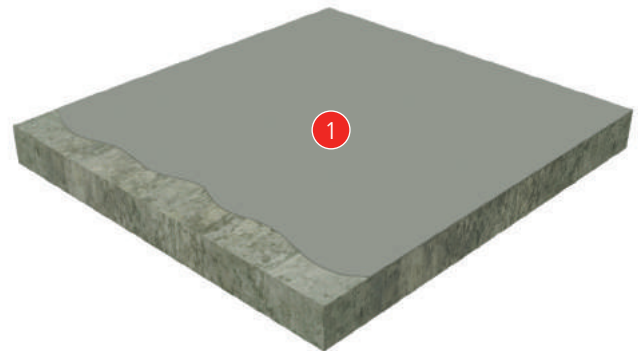
System Benefits

- Excellent wetting characteristics
- High build base coat with superb adhesion
- Can be applied to a wide range of substrates
- Contains excellent detailing properties
- 5 year solution when applied as complete roof waterproofing.

IKO Polimar Seal for Flat Roofs - 5 Year System

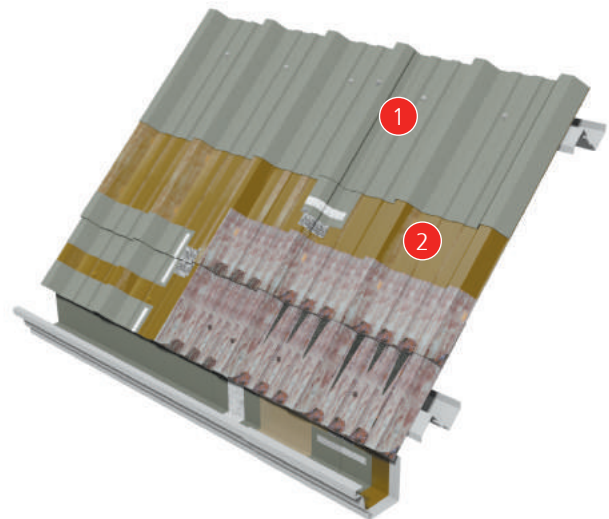
- 1 IKO Polimar Seal

Suitability of the substrate needs to be verified by IKO Technical Services prior to application.



IKO Polimar Seal for Pitched Metal Profile Roofs - 5 Year System

- 1 IKO Polimar Seal
- 2 Specified Primer



IKO Polimar CRS Glaze Protection System

IKO Polimar CRS Glaze is a high performance, high build elastomeric polyurethane clear coating designed to offer weatherproofing to glazing. IKO Polimar CRS Glaze waterproofs, laminates and protects, with UV stability and excellent adhesion. It is ideal for glazing and polycarbonate roof lights or translucent sheeting and the finish is durable with a high resistance against impact, erosion and weathering. This hi-tech system is the perfect solution for the protection of vulnerable areas and is simple and easy to use.

Features and Benefits

- Shatter resistant
- Very hard-wearing
- Transparent, clear polyurethane coating
- UV stable
- Excellent adhesion to glazing and plastic
- Quick and easy to use.



IKO Polimar CRS Sheeting & Cladding Refurbishment System

IKO Polimar CRS is a single component refurbishment system for the rejuvenation of external plastisol coated metal sheeting and cladding areas. This includes plastisol, one of the most common forms of external cladding used on industrial, commercial and leisure buildings.

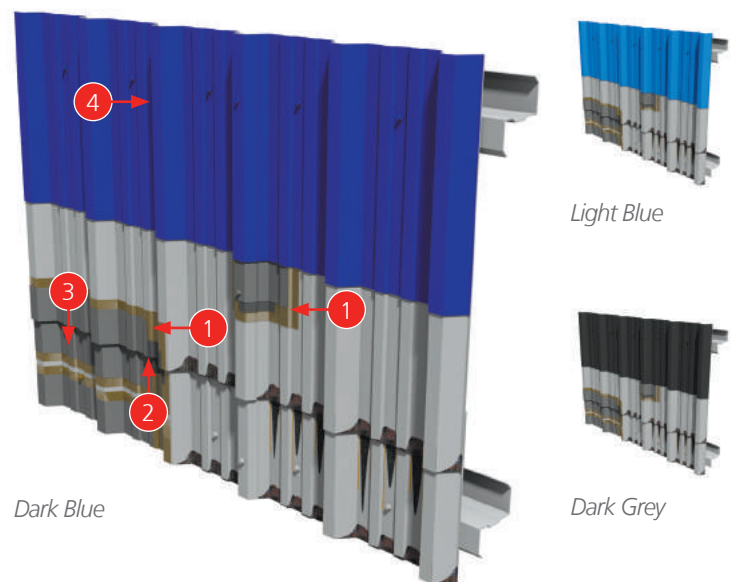
IKO Polimar CRS is a solvent based, moisture cured flexible polyurethane coating based on a unique blend of aliphatic resins reinforced with colour stable and chemical resistant pigments. It has been developed to provide a tough, durable finish with excellent erosion, weather and UV resistance. IKO Polimar CRS is available as a 10-year solution. When installed by an IKO approved contractor this material will give a design life of 10 years, dramatically reducing external exposure degradation, chalking or deterioration of adhesion. IKO Polimar CRS is available in a range of colours and can be colour matched to existing roof finishes.

System Benefits

- For areas of external cladding
- Durable and highly flexible
- Choice of colours
- Water vapour permeable
- Complex shapes easily incorporated
- Does not chalk on ageing
- Brush, roller or spray application

IKO Polimar CRS Metal Profile for Cladding Refurbishment - 10 Year System

- 1 IKO Polimar CRS Primer
- 2 IKO Polimar CRS Tape
- 3 IKO Polimar CRS Seal
- 4 IKO Polimar CRS Finish

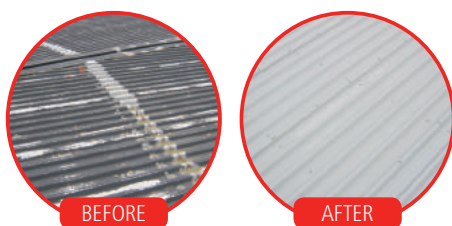


Total System Protection

This comprehensive range of high performance IKO Polimar CRS products and ancillaries will enhance and protect the external plastic coated metal sheeting and cladding area of your roof, wall and GRP rooflights.

1. IKO Polimar CRS for enhanced protection and aesthetics

Refurbish, rejuvenate and protect (enhance the aesthetics of your building and protect by re-waterproofing your roof).



2. IKO Polimar CRS for effective repairs

Many old steel roofs suffer badly from weather corrosion, which usually begins at the end laps where edges can peel. IKO Polimar CRS can be used as a cost effective and reliable solution to treat end-lap and overlap corrosion problems.



IKO Polimar FCS Balcony and Walkway System

IKO Polimar FCS Balcony and Walkway System is a fast curing, highly durable and flexible, slip resistant waterproofing coating for both refurbishment and new build projects.

The system is a high performance PMMA coating with fast curing properties reducing the installation time to hours rather than days, ideal when working in areas with regular foot traffic. Once applied IKO Polimar FCS is waterproof, UV resistant, seamless, and resistant to dilute acids and alkalis, oil, petrol and diesel.

IKO Polimar FCS is a 2-pack system based on high performance resin. The system consists of a primer, waterproofing, a 3mm self-levelling wear course with a hard wearing slip resistant aggregate and a sealing top coat.

All detailing and penetrations are required to be waterproofed using IKO Polimar FCS Detailing fully reinforced with IKO Polimar FCS Detailing Fleece.

The IKO Polimar FCS Sealer Coat is available in three standard colours which are light grey, medium grey and dark grey. Other BS 4800 or RAL colours are available on special order.

Applications

IKO Polimar FCS is designed for a wide range of applications including:

- Balconies & walkways
- Pedestrian ramps
- Stairs
- Driveways
- Railway platforms
- Cycle paths.

Durability

The IKO Polimar FCS liquid applied system is designed to give up to 20 years protection when applied by an IKO Approved Polimar FCS Contractor in accordance with an IKO specification.



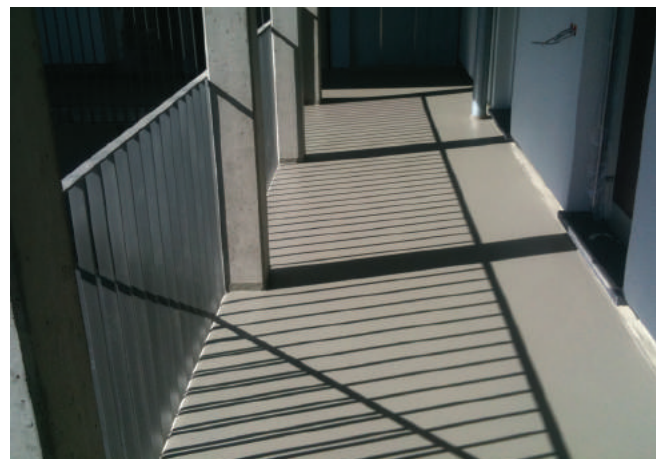
BEFORE



AFTER

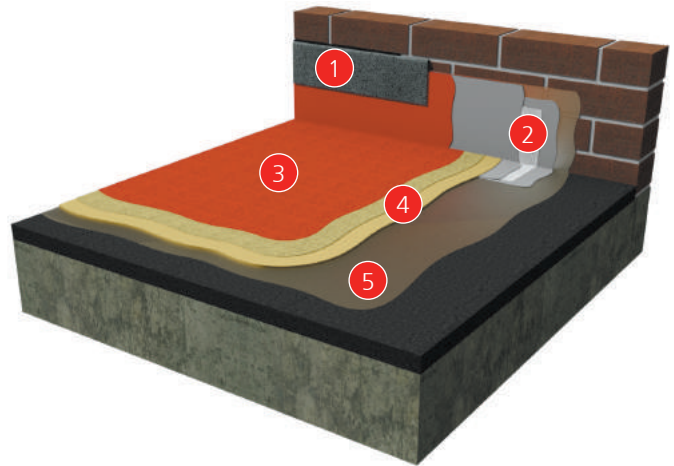
System Benefits

- Rapid curing times
- Excellent chemical resistance
- Slip-resistant
- Self levelling for ease of application
- Hygienic and easily cleaned
- Year round application possible
- Excellent waterproofing performance
- Additional surface coat in any RAL colour available
- 25 year BBA Certified System (fully reinforced)
- 20 minute cure time per coat.



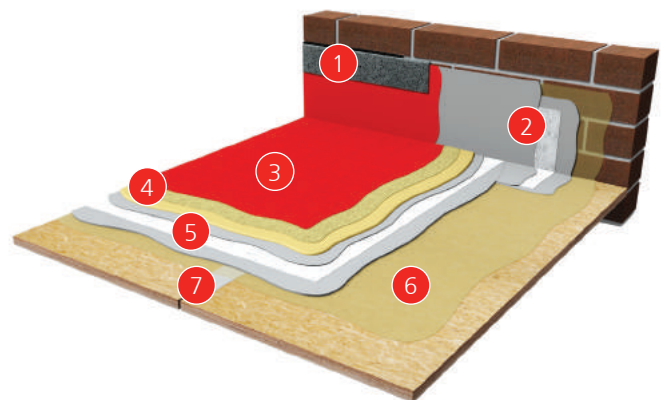
IKO Polimar FCS Balcony and Walkway (Asphalt on Concrete Deck) - 15 Year System

- 1 IKOflash Lead Free Flashing
- 2 IKO Polimar FCS Detailing with IKO Polimar FCS Detailing Fleece reinforcement
- 3 IKO Polimar FCS Sealer Coat
- 4 IKO Polimar FCS Wear Course with broadcast IKO Polimar Quartz Sand
- 5 Specified IKO Polimar FCS Primer



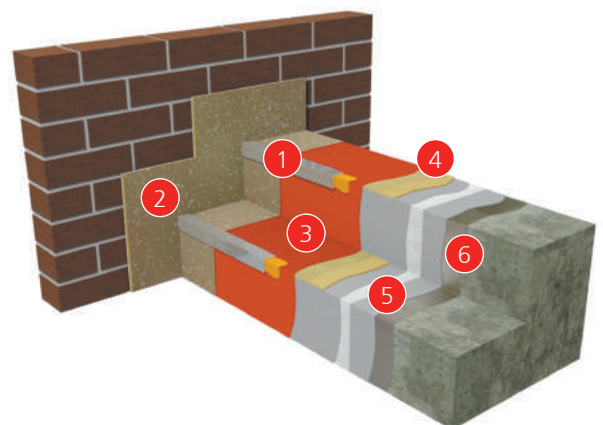
IKO Polimar FCS Balcony and Walkway (Timber Deck) - 20 Year System

- 1 IKOflash Lead Free Flashing
- 2 IKO Polimar FCS Detailing with IKO Polimar FCS Detailing Fleece reinforcement
- 3 IKO Polimar FCS Sealer Coat
- 4 IKO Polimar FCS Wear Course with broadcast IKO Polimar Quartz Sand
- 5 IKO Polimar FCS Waterproofing with IKO Polimar FCS Fleece reinforcement
- 6 Specified IKO Polimar FCS Primer
- 7 IKOpro Bridging Tape



IKO Polimar FCS Balcony and Walkway (Steps/Stairs)

- 1 Protective Stair Nosing
- 2 IKO Polimar FCS Detailing with IKO Polimar FCS Detailing Fleece reinforcement. Finished with IKO Polimar Sealer Coat and Deco Chip Finish
- 3 IKO Polimar FCS Sealer Coat
- 4 IKO Polimar FCS Wear Course with broadcast IKO Polimar Quartz Sand to treads
- 5 IKO Polimar FCS Waterproofing with IKO Polimar FCS Fleece reinforcement
- 6 Specified IKO Polimar FCS Primer



IKO Polimar FCS Car Park System

IKO Polimar FCS Car Park Waterproofing System is a fast curing, highly durable and flexible, slip resistant waterproofing coating.

A seamless, waterproofing system that is able to withstand typical mechanical stresses. It contains a highly flexible and fleece-reinforced waterproofing layer as well as abrasion-resistant system layers for vehicle and foot traffic.

The waterproofing system's liquid application and high bonding strength on almost any substrate also allows penetrations and upstands to be integrated securely and seamlessly. These properties make the system a cost-effective solution for car parks, especially for refurbishment projects.

IKO Polimar FCS Car Park Waterproofing System consists of a primer, a waterproofing layer, a reinforcement fleece, a 3mm self levelling wear course with a hard wearing slip resistant surfacing suitable for vehicle traffic.

IKO Polimar FCS Sealer Coat is available in three standard colours which are light grey, medium grey and dark grey. Other BS4800 or RAL colours are available on special order.

Applications

The polyester fleece-reinforced waterproofing layer of the IKO Polimar FCS car park makes the system particularly suitable for all areas that include joints or that are highly susceptible to cracking. The heavy duty wearing layer, the modifiable skid or slip characteristics and the extensive surface design options, provide the necessary flexibility to meet the individual requirements of the car park.

Durability

The IKO Polimar FCS Car Park Waterproofing System is designed to give up to 10 years protection when installed by an IKO Approved FCS Contractor in accordance with an IKO specification. It is also fast curing – (20 to 30 minutes between layers) and trafficable after 45 minutes.

System Benefits

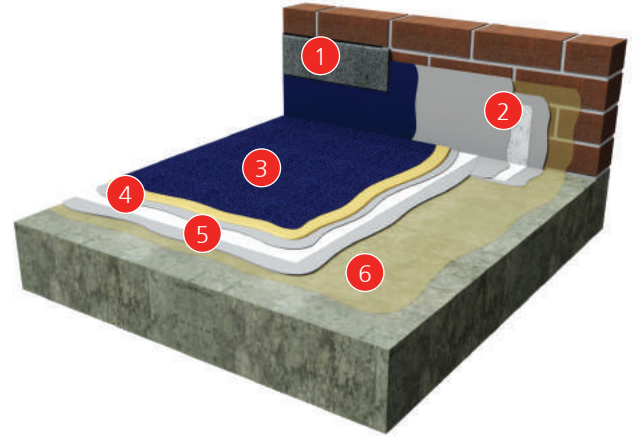
- Seamless waterproofing layer with fleece reinforcement
- Heavy-duty wearing layer for vehicle and foot traffic
- Fully bonded to the substrate, therefore no flow paths for water
- Liquid application ensures seamless incorporation and secure waterproofing of the most complex upstands
- Permanently flexible even at low temperatures
- Permanently weather-resistant (resistant to high and low temperatures, UV rays, hydrolysis)
- Resistant to most commonly used acids and alkali solutions
- Design options (colour finish, bay markings, lines and symbols, etc)
- Easy and fast application. All layers cure in 20 minutes



IKO Polimar FCS Car Park External Concrete Deck - Wall Upstand

- 1 IKOflash Lead Free Flashing
- 2 IKO Polimar FCS Detailing 2 coats with IKO Polimar FCS Detailing Fleece reinforcement
- 3 IKO Polimar FCS Surfacing
- 4 IKO Polimar FCS Wear Course
- 5 IKO Polimar FCS Waterproofing with IKO Polimar FCS Fleece reinforcement
- 6 IKO Polimar FCS Low Viscosity Primer

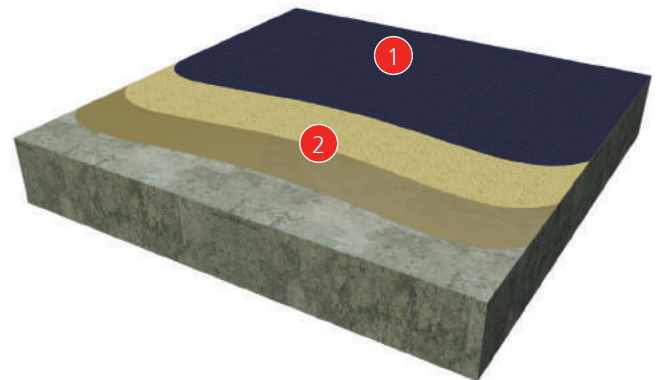
Suitability of the substrate needs to be verified by IKO Technical Services prior to application.



IKO Polimar FCS Car Park Intermediate Decks (option)

- 1 IKO Polimar FCS Sealer Coat
- 2 Specified IKO Polimar FCS Primer with broadcast IKO Polimar Quartz Sand

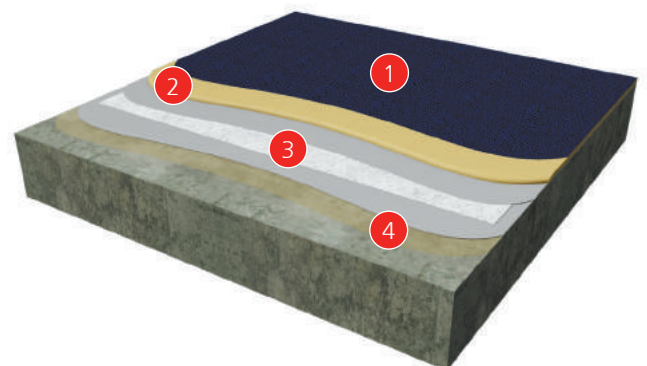
Suitability of the substrate needs to be verified by IKO Technical Services prior to application.



IKO Polimar FCS Car Park External Concrete Deck Ramp

- 1 IKO Polimar FCS Heavy Duty Surfacing
- 2 IKO Polimar FCS Wear Course
- 3 IKO Polimar FCS Waterproofing with IKO Polimar FCS Fleece reinforcement
- 4 Specified IKO Polimar FCS Low Viscosity Primer

Suitability of the substrate needs to be verified by IKO Technical Services prior to application.



Coverage Rates

Flat Roof Systems

	5 Year System IKO Polimar Seal			10 Year System IKO Polimar WG			15 Year System IKO Polimar EC/UV		20 Year System IKO Polimar EC/UV	
		Typical smooth substrate	Typical rough substrate		Typical smooth substrate	Typical rough substrate		Typical substrate		Typical substrate
Primer	N/A	N/A	N/A	N/A	N/A	N/A	GP Primer	0.3 l/m ²	GP Primer	0.3 l/m ²
Embedment	N/A	N/A	N/A	IKO Polimar WG	0.7 l/m ²	1.0 l/m ²	IKO Polimar EC	1.2 l/m ²	IKO Polimar EC	1 l + 1 l/m ² <small>wet on wet</small>
Reinforcement	N/A	N/A	N/A	IKO Polimar 100 GRF			IKO Polimar 100 GRF		IKO Polimar 225 GRF	
Top coat (1)	IKO Polimar Seal	1.0kg/m ²	*	IKO Polimar WG	0.5 l/m ²	0.5 l/m ²	IKO Polimar UV	0.5 l/m ²	IKO Polimar UV	0.5 l/m ²

*IKO Polimar Seal can be applied to a rough substrate at a coverage rate of 1.4kg/m², however time must be taken to ensure the material is pushed into the surface irregularities and cracks. The best way of achieving this is to 'stipple' the material using a brush.

Notes:

Primers - Primers are not normally required but metal, porous surfaces and other specific substrates may require priming. **ADHESION TESTS MAY BE REQUIRED ON CERTAIN SURFACES.** IKO Polimar GP Primer is recommended on rough substrates when using the IKO Polimar EC/UV system. IKO Polimar GP Primer is not compatible with IKO Polimar Seal or IKO Polimar WG systems.

Embedment - The coverage rates quoted are **typical** values for the type of surface indicated – more material will be required where the surface condition of the substrate is variable - **FULL EMBEDMENT OF THE GLASS REINFORCEMENT (GRF) MUST BE ACHIEVED IN ALL CASES.**

Reinforcement - All flat roofs must be fully reinforced with IKO Polimar 100 GRF or 225 GRF depending on the system specified. Additional localised reinforcement using IKO Polimar KRM, IKO Polimar Seal Reinforcing Fleece and IKO Polimar BT Bridging Tape will be required over joints and other areas where movement may be expected.

Top coats - The coverage rates quoted are the **minimum** required for each system.

Profiled Sheet Roof Systems

	5 Year System IKO Polimar Seal		10 Year System IKO Polimar WG		15 Year System IKO Polimar EC/UV		20 Year System IKO Polimar EC/UV	
	Primer	IKO Polimar MC (metal surfaces)	0.11 l/m ²	IKO Polimar MC	0.11 l/m ²	IKO Polimar MC	0.11 l/m ²	IKO Polimar MC
					IKO Polimar GP (rough surfaces)	0.3 l/m ²	IKO Polimar GP (rough surfaces)	0.3 l/m ²
Embedment	N/A		IKO Polimar WG	0.5 l/m ²	IKO Polimar EC	1.0 l/m ²	IKO Polimar EC	1.2 l/m ²
Reinforcement	IKO Polimar GRF (localised)		IKO Polimar GRF (localised)		IKO Polimar GRF (localised)		IKO Polimar GRF (localised)	
Top coat (1)	IKO Polimar Seal	0.7kg/m ²	IKO Polimar WG	0.5 l/m ²	IKO Polimar UV	0.5 l/m ²	IKO Polimar UV	0.5 l/m ²

Notes:

Primers - Primers are not normally required but metal, porous surfaces and other specific substrates may require priming. **ADHESION TESTS MAY BE REQUIRED ON CERTAIN SURFACES.** IKO Polimar GP Primer is recommended on rough substrates when using the IKO Polimar EC/UV system. IKO Polimar GP Primer is not compatible with IKO Polimar Seal or IKO Polimar WG systems.

Base Coats - The coverage rates quoted are **typical** values for a smooth substrate – more material will be required where localised reinforcement is required or the surface condition of the substrate is rough or variable - **FULL EMBEDMENT OF LOCALISED REINFORCEMENT MUST BE ACHIEVED IN ALL CASES.**

Reinforcement - All pitched roofs, joints, boltheads etc must be locally reinforced with IKO Polimar KRM and Bridging Tape.

Top coats - The coverage rates quoted are the **minimum** required for each system.

Sheeting & Cladding Systems

	10 Year System IKO Polimar CRS	
Primer	IKO Polimar CRS Primer	8-10m ² /l
Tape	IKO Polimar CRS Tape	10m x 75mm
Seal	IKO Polimar CRS Seal	0.7-1.0kg/m ²
Coating	IKO Polimar CRS Finish	6.7m ² /l

Notes:

Primers - Primers are not normally required on sound plastisol surfaces. Exposed metal must be suitably prepared and primed with IKO Polimar AP.

Coating - Two coat system (some applications with no colour change may require only one coat).

The coverage rates quoted are **minimum** values.

IKO Polimar FCS

Description	Consumption Rate (dependent on surface roughness)	m ² per unit
Primers		
FCS Primer	0.5kg per m ²	20m ²
FCS Concrete Primer	0.5kg per m ²	20m ²
FCS Bitumen Primer	0.5kg per m ²	20m ²
FCS Low Viscosity Primer	0.5kg per m ²	20m ²
FCS Metal Primer	0.2kg per m ²	5m ²
Liquid Coatings		
FCS Low Odour Waterproofing	(Smooth) 2.5kg per m ² (Fine grained substrate) 3.0kg per m ² (Rough substrate) 3.5kg per m ²	4m ² 3.3m ² 2.8m ²
FCS Waterproofing	(Smooth) 2.5kg per m ² (Fine grained substrate) 3.0kg per m ² (Rough substrate) 3.5kg per m ²	4m ² 3.3m ² 2.8m ²
FCS Detailing	2.5kg per m ²	4m ²
FCS Sealer Coat	0.5kg per m ²	20m ²
Accessories		
FCS Wearing Course - powder 23kg and resin 10kg	4.0kg per m ²	8.3m ²
FCS Surfacing	2.2kg per m ²	6.8m ²
FCS Heavy Duty Surfacing	3.5kg per m ²	4.2m ²
⁽¹⁾ FCS Levelling Mortar	2.2kg/m ² per mm thickness	variable
FCS Filler	1.7kg/m ² per mm thickness	variable
FCS Reinforced Filler	1.4kg/m ² per mm thickness	variable
FCS Catalyst	2 bags per unit of resin	variable
FCS Fleece	-	50m ²
FCS Detailing Fleece	-	13m ²
⁽²⁾ FCS Deco Chips	Up to 0.05kg/m ² depending on effect required	variable depending on effect required
IKO Polimar Aggregate	2kg per m ²	12.5m ²
IKO Polimar FCS Cleaner	-	-
FCS Mixing Bucket	-	-
FCS Cleaning Bucket	-	-

⁽¹⁾ FCS Levelling Mortar: 2 components, 10Kg pack (Resin + Filler Mix). The packaged resin is included inside the activated filler mix bucket.

⁽²⁾ FCS Deco Chips colour: available in white, grey and black



Ancillaries

IKO Polimar EC/UV System

IKO Polimar MC Primer is a high performance anticorrosive epoxy coating designed for use as a versatile universal primer on a wide range of metal surfaces. This product is supplied as two components which are mixed together. Use MC Base with MC Activator or MC Base with MC Activator.

IKO Polimar GP Primer is a high performance, low viscosity primer designed for use as a multipurpose sealing and priming system for porous mastic asphalt and cementitious roof substrates prior to the application of IKO Polimar EC/UV liquid roofing systems.

IKO Polimar GRF is a high performance glass fibre-reinforcing fleece that is embedded within the IKO Polimar base coat for total reinforcement of all types of flat roofs – available in two weights, depending on performance and guarantee requirements.

IKOpro Bridging Tape for joints and gaps, in conjunction with IKO Polimar KRM.

IKO Polimar KRM is a flexible reinforcing mesh used on all gaps, joints, seams etc where movement is likely.

Warm Roof Components

IKO Polimar Preparation Membrane is used as a preparation membrane prior to the application of the IKO Polimar system. It comprises of a self-adhesive SBS modified glass reinforced base.

IKO Systems SA VCL is a self-adhesive vapour control layer, composed of an aluminium core, with a tough, polyester base and coated with self-adhesive SBS modified bitumen.

IKOpro Systems Bonding Agent is a specially formulated primer that activates the adhesive coating of the IKO Polimar Preparation Membrane and Systems SA VCL to promote a strong bond even at low temperatures.

IKO enertherm Insulation Boards is the latest generation of rigid foam PIR insulation panels with the highest thermal performance.

Accessories

A range of rooflights, handrails, roof demarcation systems and GRP trims are also available.

IKO Polimar CRS Sheeting & Cladding Refurbishment System

IKO Polimar CRS Primer is a universal anti-corrosive primer for prepared bare metal and other surfaces prior to application of IKO Polimar CRS Finish.

IKO Polimar CRS Tape is a self-adhesive, butyl rubber based tape used to bridge lap joints prior to application of IKO Polimar CRS Seal.

IKO Polimar CRS Seal is a single pack urethane with reinforcing fibres, used as a bridging strip coat on lap joints and to reinforce around bolt-heads prior to the application of IKO Polimar CRS Finish.

IKO Polimar FCS Systems for Roofs, Car Parks and Balcony & Walkways

IKO Polimar FCS Fleece - embedded into the first coat of IKO Polimar FCS Waterproofing to offer total reinforcement when using the IKO Polimar FCS system.

IKO Polimar FCS Detailing Fleece - reinforcement for all details.

IKO Polimar FCS Catalyst - a universal catalyst for all FCS resin products.

IKO Polimar FCS Cleaner - acetone cleaner for cleaning tools and mixing equipment.

IKO Polimar FCS Filler - for filling and levelling small indentations in the substrate.

IKO Polimar FCS Reinforcing Filler - for reinforcing to intricate penetrations.

IKO Polimar FCS Levelling Mortar - a fast-reactive repair and levelling mortar used for filling and smoothing over faults and cavities in the substrate.

IKO Polimar FCS Surfacing* - for flat & heavy duty car park areas.

IKO Polimar FCS Heavy Duty Surfacing** - for ramps and HGV service decks (additional to the above for IKO Polimar FCS Car Park System).

*additional for IKO Polimar FCS Car Park System

**additional for IKO Polimar FCS Car Park System

IKO Polimar Projects

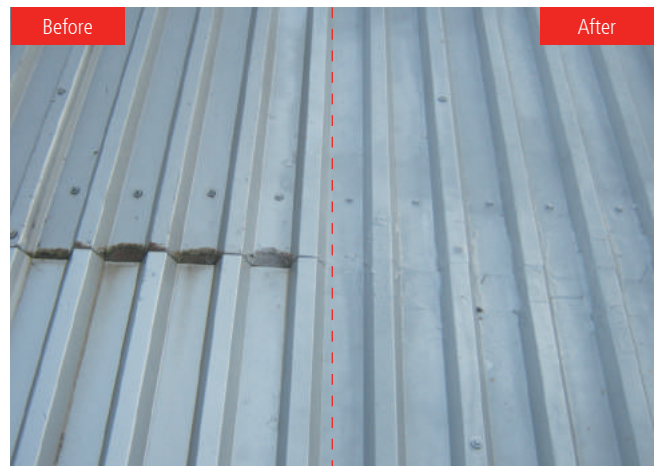
IKO Polimar EC/UV



IKO Polimar FCS



IKO Polimar CRS





IKO PLC

Appley Lane North
Appley Bridge
Wigan
Lancashire WN6 9AB
www.ikogroup.co.uk

**Member of the
IKO Group**

November 2018

Sales Support

t: 01257 256 865
f: 01257 251 855
sales.uk@iko.com

Technical Services

t: 01257 256 864
technical.uk@iko.com

Northern Ireland

14 Sanda Road
Whitehouse, Newtownabbey
County Antrim BT37 9UB

t: 028 9086 7079
f: 028 9086 9079
waterproofing@iko-ni.com
www.iko-ni.com

Ireland

502 Northwest Business Park
Ballycoolin
Dublin 15

t: 01 8855 090
f: 01 8855 858
waterproofing@iko.ie
www.iko.ie